



Dear

Thank you for your kind enquiry. We are pleased to enclose details of our holiday cottages for the 2015 season.

Doubleton Farm dates back in parts to the 17th Century. Set in 4 acres of countryside overlooking the Mendip Hills, the original hay lofts, stables and barns have been converted into character holiday cottages. The facilities include:-

- ANIMAL FEEDING TIME**
- ADVENTURE PLAY AREA**
- COTS, HIGHCHAIRS, BABYBATHS, CHANGE MATS, BEDGUARDS, STAIRGATES - no extra charge.**
- CHILDREN'S WELCOME PACKS**
- GAMES, RACKETS, BALLS etc. available to borrow**
- SMALL BIKES, CARS, SCOOTERS (under 10 years)**
- TV's, DVD, plus FREE DVD LIBRARY**
- LAUNDRY CABIN**
- CAR PARKING**
- FREE WI-FI**
- ALL COTTAGES - NON SMOKING**
- FREE HIGH SEASON BBQ EVENINGS**
- FULLY EQUIPPED KITCHEN inc COOKER, MICROWAVE and FRIDGE**
- FREE SUNDAY PAPERS**
- DUVETS & BED LINEN PROVIDED**
- INDIVIDUALLY CONTROLLED HOT WATER & ELECTRICITY**
- DOGS BY ARRANGEMENT IN CERTAIN COTTAGES ONLY. £15 per pet per week. Must be pre-booked.**

Outside every cottage is a patio with picnic benches. Six cottages face onto a large lawned area, ideal for sun bathing, playing games, reading your free Sunday paper or having a BBQ. There is a large children's adventure play area and pets corner ***Touch & Feed***, with chickens and guinea pigs. Six of the cottages are on the ground floor.

Situated just 4 miles from the beach at Weston-super-Mare, and within easy reach of Bath, Bristol, Cheddar Gorge, Wookey Hole, Wells, Clarks Shopping Village, historic Glastonbury and Axbridge.

Two shopping precincts are just one mile away, with Sainsbury's, Morrisons, post office, chemist, newsagent and even a cider farm! Bus stops to Weston super Mare & Bristol are 50 meters walk from the cottages. Many fine sporting facilities are also close by including, golf courses, horseriding, swimming, paintballing, karting, caving, tennis, kayaking, canoeing, archery, abseiling, squash courts and even a dry ski slope! We have some wonderful walks close by and plenty of Ordnance Survey maps that you can borrow. We are family owned and managed and pride ourselves on a friendly, relaxed atmosphere. Tariff list, floor plans and booking form are enclosed. Phone or email to make a booking, check availability or if you require more information and the booking form and deposit can follow in the post.

We look forward to hearing from you soon.

Yours sincerely,

John and Victoria Southwood

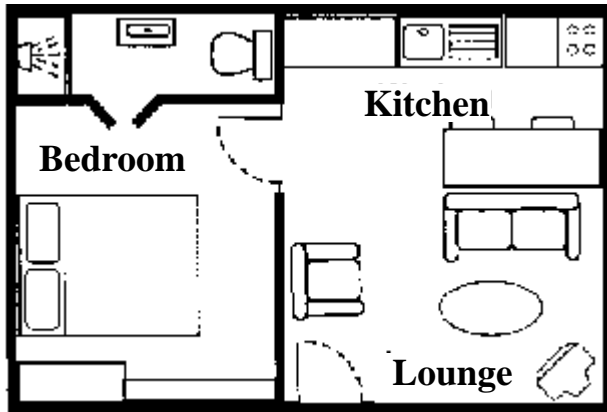
**Doubleton Farm Cottages, Hewish, Weston-s-Mare, Somerset. BS24 6RB**  
**Tel/Fax: 01934 520225    Email: [info@doubleton.com](mailto:info@doubleton.com)    Web site: [www.doubleton.com](http://www.doubleton.com)**



# HARVESTER COTTAGE

**Sleeps up to 2**

- NON SMOKING
- 2 COTTAGES ARE NO PETS



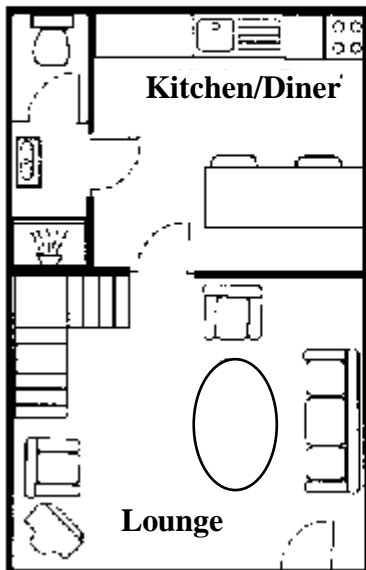
We have four of these, each have a double bed, fitted wardrobe and dressing table. The shower bathroom is en-suite to the bedroom. The kitchen with breakfast bar or table is open plan with the living room.

Harvester cottages are cosy, and are on the ground level. Two cottages accept dogs.

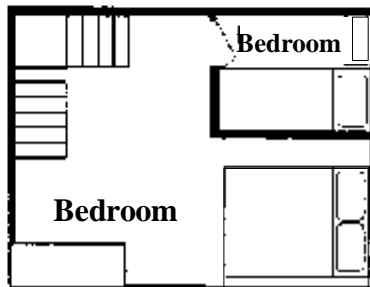
LAYOUT AND CONTENT OF COTTAGES MAY CHANGE OWING TO CONSTANT IMPROVEMENTS

This cottage is ideal for couples.

Withy cottage takes its name from the abundance of willow trees in the area, for which is the local name.



This two bedroom cottage has a large comfortable living room, down two steps to a large kitchen with dining table. The shower bathroom is on the ground floor. Up the wrought iron staircase is a double bedroom, wardrobe and dressing table.



The second bedroom has bunk beds for the kids.

The Withy cottage overlooks the garden and fields.

LAYOUT AND CONTENT OF COTTAGES MAY CHANGE OWING TO CONSTANT IMPROVEMENTS

- NON SMOKING
- NO PETS

# WITHY COTTAGE

**Sleeps up to 2 adults  
& 2 children**

# SHIRE COTTAGE

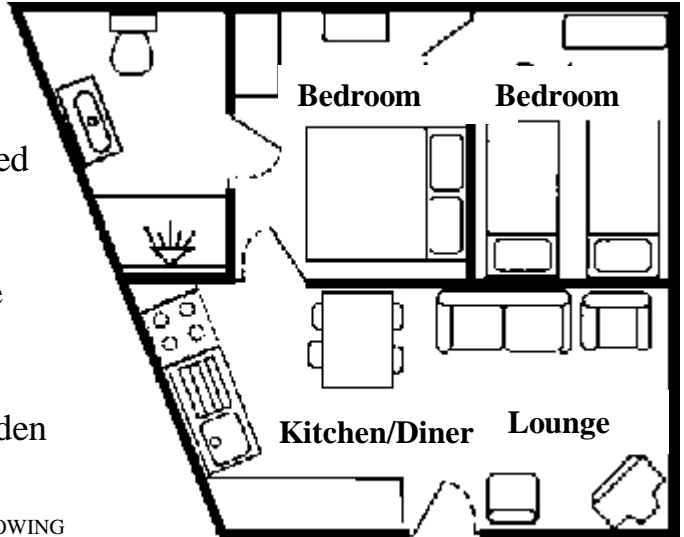
- NON SMOKING
- NO PETS

The Shire cottage was one of the farm stables. Ideal for family occupancy with two connecting bedrooms, one double with en-suite shower bathroom, and one twin bedded room (2.6" beds).

The living room is open plan with the kitchen, which has a dining table.

The cottage, which overlooks the garden and fields is on the ground floor.

LAYOUT AND CONTENT OF COTTAGES MAY CHANGE OWING TO CONSTANT IMPROVEMENTS



**Sleeps up to 2 adults  
& 2 children**

The Dairy is part of the original farmhouse, which dates back to the 17<sup>th</sup> century with character low ceilings.

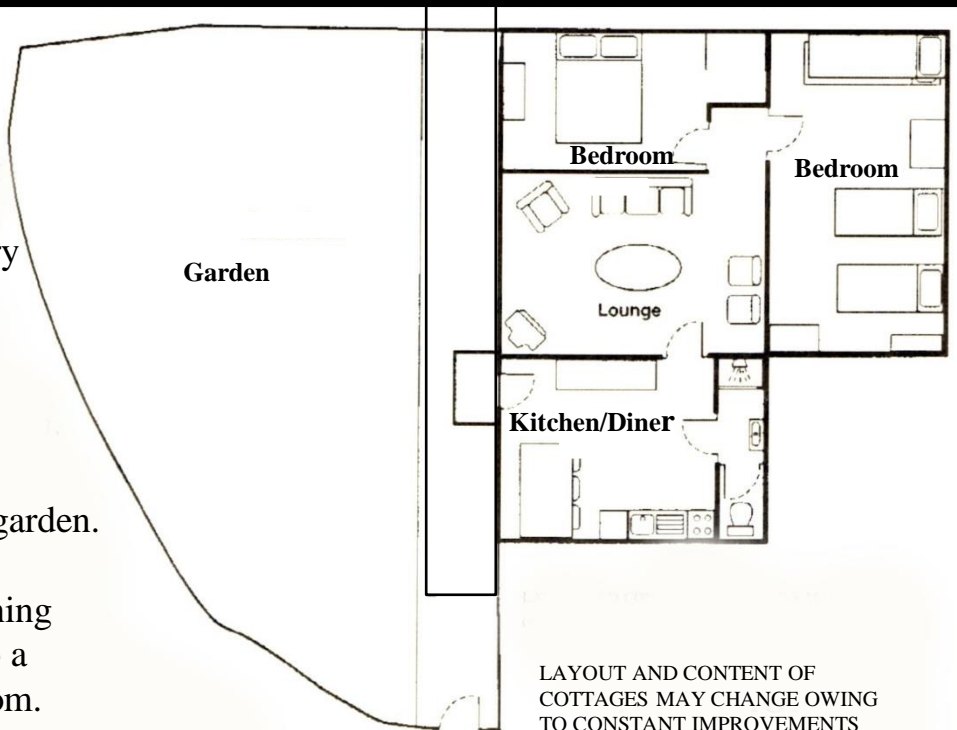
It is on the ground floor with it's own enclosed and lawned garden.

The kitchen with a dining table, leads through to a comfortable living room.

There are two bedrooms, one with a double and the other with two single beds and bunk beds.

There is a shower bathroom.

This cottage accepts dogs.



LAYOUT AND CONTENT OF COTTAGES MAY CHANGE OWING TO CONSTANT IMPROVEMENTS

- NON SMOKING

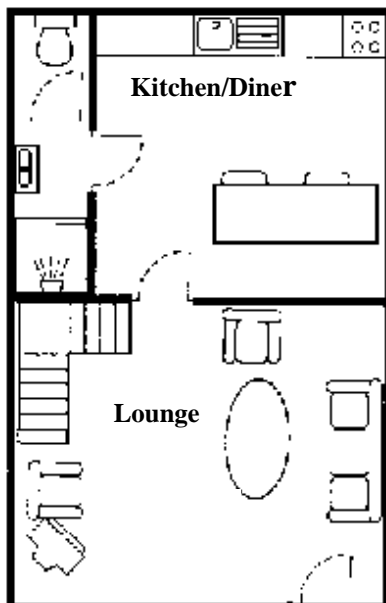
**Sleeps up to 4 adults  
& 2 children**

# THE DAIRY

# FORESTER COTTAGE

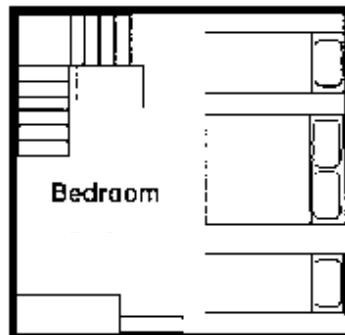
We have two Forester Cottages, looking south over the garden and fields. A spacious living room leads through to a large kitchen with dining room table. The shower bathroom, is on the ground floor.

The wrought iron staircase leads you to a large family bedroom with one double and two single beds (2.6"), a wardrobe and dressing table.



- NON SMOKING
- NO PETS

**Sleeps up to 2 adults  
& 2 children**

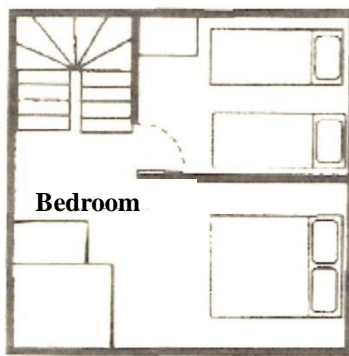
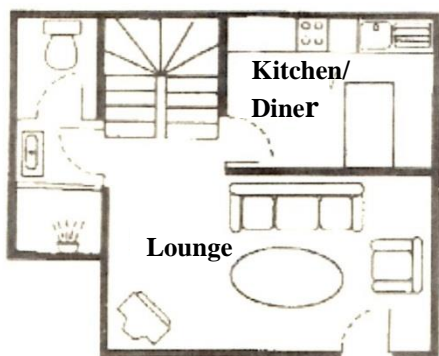


This cottage is ideal for a family with younger children.

LAYOUT AND CONTENT OF COTTAGES MAY CHANGE OWING TO CONSTANT IMPROVEMENTS

Before being made into a cottage there was only a family of swallows in residence in this bull pen!

There is a separate living room and kitchen with a dining table. The shower bathroom is on the ground floor. Up the wrought iron staircase you enter a room with a double bed, wardrobe and dressing table.



The second bedroom has twin beds, with a wardrobe making this an ideal cottage for two couples or a family.

LAYOUT AND CONTENT OF COTTAGES MAY CHANGE OWING TO CONSTANT IMPROVEMENTS

# SWALLOW COTTAGE

**Sleeps up to 4**

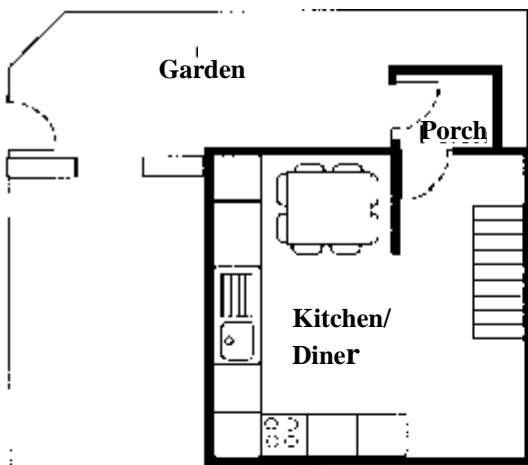
# THE GABLES

- NON SMOKING
- NO PETS

The Gables is part of the original farmhouse from the late 17<sup>th</sup> century. It has character low ceilings, nooks and crannies and plenty of space.

**Sleeps up to 6 adults  
& 2 children**

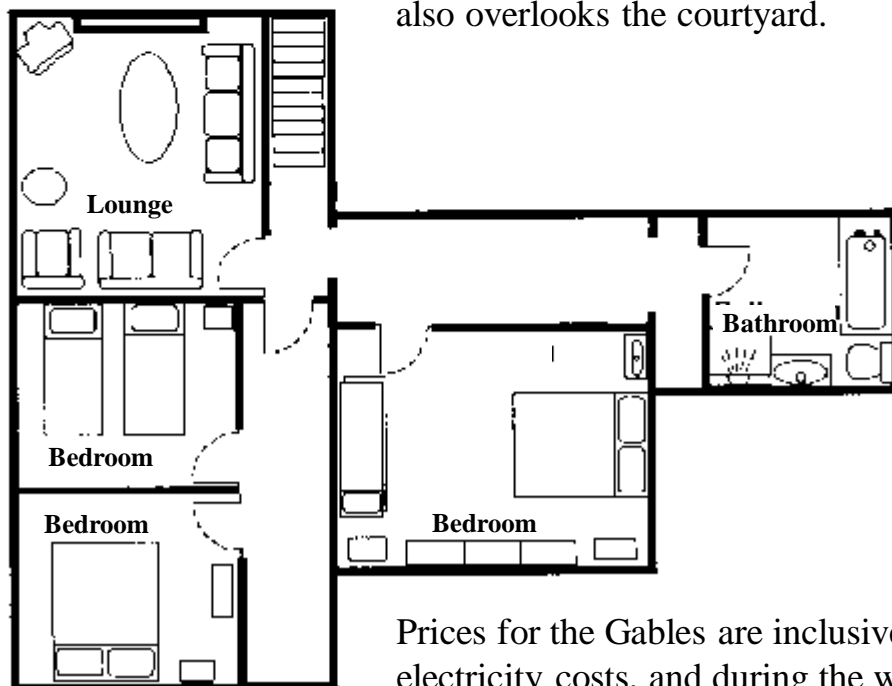
It has its own private enclosed garden. The porch, hallway and large kitchen with dining table, fridge and full size freezer are downstairs. Stairs lead up to the living room on the first floor with a natural stone fireplace, gas fire and a window seat.



The master bedroom, has a double bed and bunk beds, fitted wardrobes and its own wash basin.

The bathroom has a bath with hand-shower and a separate shower.

The second bedroom has two single beds, a window seat overlooking the courtyard and a character walk-in wardrobe, which is part of the old chimney recess. The third bedroom has a double bed, wardrobe and also overlooks the courtyard.



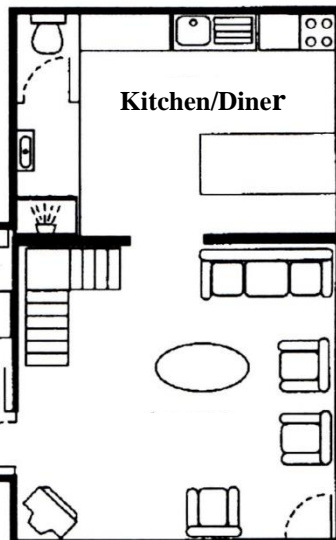
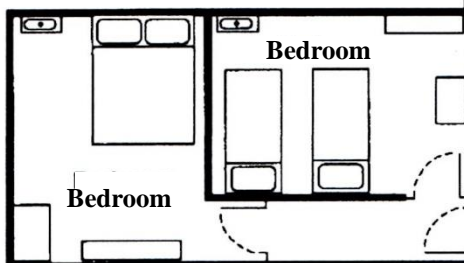
Prices for the Gables are inclusive of all electricity costs, and during the winter months central heating is provided.

# MENDIP COTTAGE

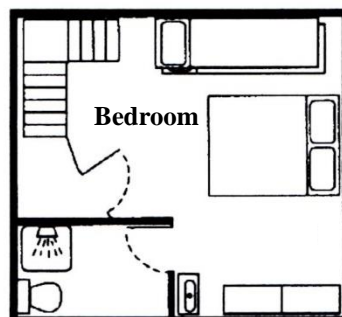
- NON SMOKING
- NO PETS

Mendip cottage is a large three bedroom cottage looking out over the garden and fields. It has a large living room with a doorway to two ground floor bedrooms, one double and one twin, both have wash hand basins.

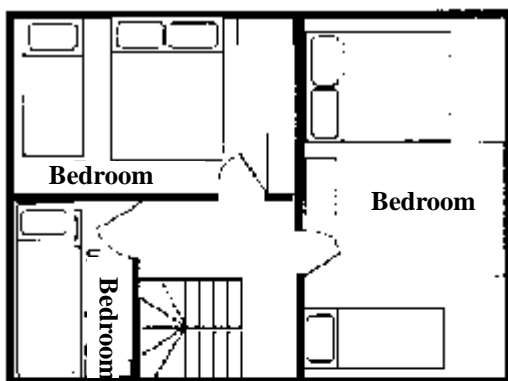
**Sleeps up to 6 adults & 2 children**



Two steps down to the large kitchen, also on the ground floor, which has a fridge & half size freezer, and dining table. There is a shower bathroom on the ground floor. Up the wrought iron staircase is a double bedroom with bunk beds plus an en-suite shower bathroom.



LAYOUT AND CONTENT OF COTTAGES MAY CHANGE OWING TO CONSTANT IMPROVEMENTS

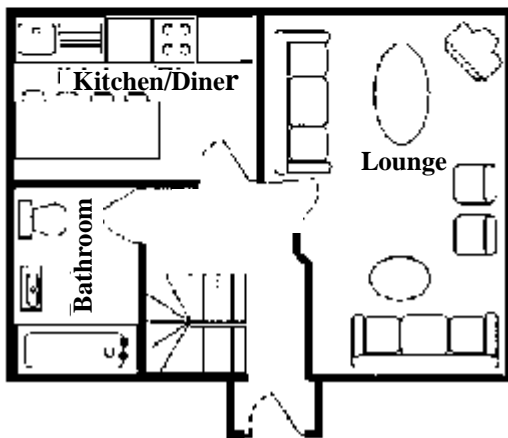


Keepers is a three bedroom cottage. Leading from the hallway, is a large living room, kitchen with dining table, fridge & half size freezer. There is bathroom with bath with a hand shower.

A wrought iron staircase leads up to a landing with three bedrooms, one double bedroom, one with a double bed plus a single bed and one single bedroom.

- NON SMOKING
- NO PETS

**Sleeps up to 6 adults**



# KEEPERS COTTAGE

LAYOUT AND CONTENT OF COTTAGES MAY CHANGE OWING TO CONSTANT IMPROVEMENTS



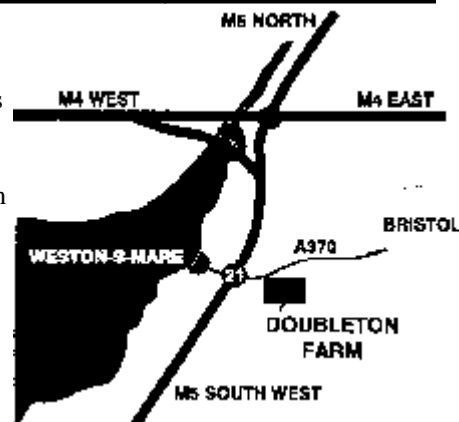
# TARIFF LIST 2015

Week commencing Saturday	Before May 16th	ALL OTHER TIMES	July 25 <sup>th</sup> To August 22 <sup>nd</sup> [5 weeks]
Harvester Cottage Sleeps 2	£250	£270	£280
Forester Cottage Sleeps up to 4	£320	£350	£430
Withy Cottage Sleeps up to 4	£340	£370	£470
Shire Cottage Sleeps up to 4	£340	£370	£470
Swallow Cottage Sleeps up to 4	£340	£370	£470
The Dairy Sleeps up to 6	£410	£430	£540
Keepers Cottage Sleeps up to 6	£420	£450	£560
Mendip Cottage Sleeps up to 8	£470	£500	£610
The Gables Sleeps up to 8	£490	£530	£640

Prices quoted are per cottage per week. Duvets, bed linen and teatowels are included in the price. Cots, bedding, baby baths, highchairs, bedguards, changing mats and stairgates - free of charge. The only extra to these prices is your own £1 coin operated meter for electricity, set at normal domestic rate.

You can see from the map how easy we are to find, being just four miles from the beach at Weston-super-Mare, yet only a short distance from the beautiful Mendip Hills and countryside.

Leave the motorway at Junction 21 and take the exit signposted for Bristol and Congresbury (A370). We are the second turning on the right, about 1/4 mile from the roundabout, signposted to Rolston.



# BOOKING FORM



Mr & Mrs/Miss: .....

Address: .....

.....

Postcode: .....

Phone: .....

Email: .....

In order to secure a telephone booking, this booking form & deposit must be received within 7 days. Provisional bookings will only be held for 7 days before cottages are released. Deposits are non-refundable unless we are able to re-let the accommodation.

Please reserve me:

Shire Cottage  Harvester Cottage  Withy Cottage  Forester Cottage

Swallow Cottage  The Dairy  Mendip Cottage  Keepers Cottage  The Gables

Changing Mat  Bedguard  Cot  Highchair  Babybath  Stairgate

From Saturday: .....

To Saturday: .....

For ..... adults and ..... children, ages .....

At £ ..... per cottage per week

Enclosed is a deposit for £ ..... being £100 per cottage per week, for which I will be sent an acknowledgement. Cheques payable to 'Doubleton Farm Cottages Ltd' please.

## PAYMENT ON ARRIVAL IS BY CHEQUE OR CASH ONLY.

Hand and Bath towels (not Beach) are available at an extra charge.

..... x Hand @ £2 per towel per week .....x Bath @ £3.00 per towel per week

You will be invoiced for these on arrival.

We have a pet we would like to have stay at the cottage at a charge of £15.00 Yes / No

(Pets allowed in certain cottages only - must be pre-booked)

How did you hear about us:

Stayed before  Somerset Guide  Internet  Other - please state  .....

## Cottages will be available from 2 pm on Saturdays to allow sufficient time for preparation.

Free Sunday Papers! Please tick which Sunday paper you require. One per cottage.

Express  Mirror  Mail  People  Sun

Telegraph  Times  Observer  Independent

Date: .....

Signature: .....

After you have received confirmation of your booking you are liable for the full cost of your holiday if you cancel. We recommend you take the insurance (a proposal form will be sent with your confirmation), please note that the insurance does not cover all eventualities.

**Doubleton Farm Cottages, Hewish, Weston-s-Mare, Somerset. BS24 6RB Tel: 01934 520225**